

# PERSONAL NAVIGATOR

TUESDAY, DECEMBER 4, 2012

Sunrise: 6:41 a.m. Sunset: 5:15 p.m.

Evening Attire: Cruise Casual/Pirate

All Ashore: Approx. 8:30 a.m.

All Aboard: 5:00 p.m.

Gangway: Deck 1, Midship, & Deck 1, Aft

Tuesday: Sunny High: 73°F/23°C

Wednesday: Sunny High: 73°F/23°C

DISNEY'S CASTAWAY CAY

WALT DISNEY THEATRE

The comedy & ventriloquism of

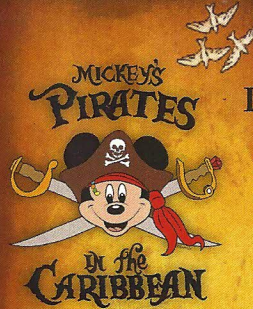
Lynn Trefzger



Decks 3 & 4 Forward

6:15 P.M.  
& 8:30 P.M.

 Assistance available at the entrance to the Walt Disney Theatre 30 minutes prior to show time.



7:45 - 8:05 p.m.

Deck Stage, Deck 11, Midship marks the spot

It's a Pirate Celebration, me hearties! Come experience all the pirate fun alongside Captain Mickey Mouse and his famous Pirate Crew. (Weather Permitting)

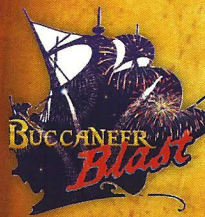
**Buccaneer Blast Fireworks**

What's a pirate party without some fireworks to remind the other ships who be ruling the oceans blue?

10:30 p.m.

Decks 11 and 12, Midship mark the spot

Fireworks will be on display Starboard side - seen best from Deck 11, center pool area, and on Deck 12.



## Disney's Castaway Cay

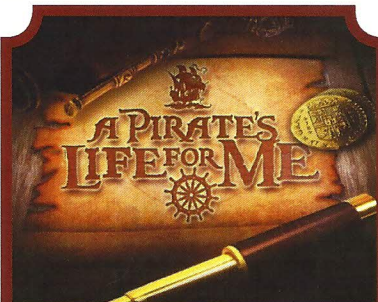
Reserved exclusively for Guests on Disney Cruise Line Bahamian and Caribbean cruise vacations, Castaway Cay is Disney's private port-of-call paradise. On this island, enjoy tropical leisure activities, such as snorkeling, boating, swimming and sunbathing.

### Friendly Reminders

- Serenity Bay is reserved for Guests 18 and older.
- Your Key To The World Card will need to be used for all transactions on Disney's Castaway Cay except for the Post Office.
- A limited number of all-terrain wheelchairs are available across from Scuttle's Cove.
- For your convenience, beach towels are available as you leave the ship; please return them at the gangway at the end of your day.
- Due to our commitment to the environment, we ask that seashells, coral and other natural treasures be left undisturbed at Disney's Castaway Cay for all to enjoy.

### Did you know?

*AquaDuck water coaster evolved from the idea of having a "lazy river" experience on the perimeter of the main "sundeck."*



### GAME SHOW

Calling all Pirates, we be! If ye have an adventurous spirit or pirate savvy, come spin the "Wheel of Destiny," for a treasure trove of fun be ripe for the takin' in this action packed pirate game show.

6:30 & 9:45 p.m.  
D Lounge,  
Deck 4, Midship



### Sport's Simulators

Digital sports simulators are available at Goofy's Sports Deck on Deck 13, Aft. This state-of-the-art virtual sports experience includes golf, basketball, baseball, hockey and soccer. Book now at the Port Adventures Desk, Deck 5, Midship.

### DINNER MENU

Animator's Palate: Pirate's Menu  
Enchanted Garden: Pirate's Menu  
Royal Palace: Pirate's Menu

### DRINK OF THE DAY

Bahama Mama (Alcoholic)  
Coco Bali (Non Alcoholic)

### IMPORTANT NUMBERS

Fire/Security: 7-3001  
Medical Emergency: 7-3000  
Health Center: 7-1923



# FAMILY ACTIVITY HIGHLIGHTS



## RUN DISNEY: CASTAWAY CAY 5K

*Meet in Evolution (12+), Deck 4, Aft - 8:30 a.m.*

Runners meet in Evolution, Deck 4, Aft, at 8:30 a.m. We will depart the ship at 8:45 a.m., and make our way to the Bike Rentals where the run will begin. Come cheer on your friends and family as they cross the finish line!

## ISLAND POWER WALK

*Meet at the Post Office, Castaway Cay - 9:30 a.m.*

Join your Cruise Staff for a brisk walk around the island. Meet outside, by the Post Office. Meet time is 9:30 a.m. Walk leaves promptly at 9:45 a.m.

## CRAB RACES

*Castaway Cay, Gazebo 1, (Near Cookies BBQ) - 11:45 a.m.*

*Castaway Cay, Gazebo 2, (Near Pelican Point Tram Stop) - 12:45 p.m.*  
Watch some local sea creatures make a break for the finish line.

## BASKETBALL FREE THROW

*In Da Shade Games, Castaway Cay - 12:00 p.m.*

Join your Cruise Staff in this fun tournament and see how many you can sink in 30 seconds!

## FAMILY WHALE DIG

*Monstro Point, Castaway Cay - 1:00 p.m.*

Our island paleontologist leads us in the excavation of a giant whale skeleton and other fossilized treasures!

## PIRATE TRIVIA

*District Lounge, Deck 4, Aft - 4:00 p.m.*

*D Lounge, Deck 4, Midship - 9:15 p.m.*

Test your nautical knowledge with your Cruise Staff in this fun Pirate Trivia.



## A PIRATE'S LIFE FOR ME

*D Lounge, Deck 4, Midship - 6:30 & 9:45 p.m.*

Calling all Pirates, we be! If ye have an adventurous spirit or pirate savvy, come spin the "Wheel of Destiny," for a treasure trove of fun be ripe for the takin' in this action packed pirate game show.



# ADULT ACTIVITY HIGHLIGHTS

## SENSES SPA SEMINARS

*Body Sculpt Boot Camp (Fee Applies) - Goofy's Sports Deck, 7:30 a.m.*

*Wake Up & Stretch Class - Senses Fitness Center, 8:00 a.m.*

*Yoga on the Beach - Serenity Bay, 10:30 a.m.*

*Seminar: Secrets to a Flatter Stomach - Senses Spa & Salon, 3:00 p.m.*

*Seminar: Acupuncture for Pain Relief - Senses Spa & Salon, 4:00 p.m.*

*Good Feet Seminar: Improving Posture - Senses Spa & Salon, 4:30 p.m.*

*Fab Abs - Senses Fitness Center, 5:30 p.m.*



## BEVERAGE SEMINARS

*Beer Tasting - 687 Pub, 4:00 p.m.*

Please make reservations for tasting at Guest Services for a nominal fee. Beverage seminars are only for Guests 21 and over.

CLUB  
18\*21

## BASKETBALL CHALLENGE

*In Da Shade Games, Castaway Cay - 1:00 p.m.*

## X-BOX CHALLENGE

*687 Pub, Deck 4, Aft - 4:30 p.m.*

## MIXER

*Currents, Deck 13, Forward - 10:00 p.m.*

## ART OF THE THEME SHOW TOUR

*Meet at Meridian, Deck 12, Aft - 2:30 p.m.*

Join us on a guided ship tour and discover the key ingredients that make the Disney Dream cruise ship one-of-a-kind.

## DISNEY VACATION CLUB® GROUP PRESENTATION

*Evolution, Deck 4, Aft - 4:30 p.m.*

Want to learn more about taking magical vacations year after year? Stop by our interactive group presentation to find out more information from a Disney Vacation Club representative.



## ESPN DREAM TEAM DRAFT DAY

*687 Pub, Deck 4, Aft - 5:00 p.m.*

Play ball! Join the "Commissioner" and engage in this interactive fantasy baseball draft unlike anything you've ever seen!

## ADULT KRAZY KARAOKE

*Evolution, Deck 4, Aft - 11:00 p.m.*

Take to the stage, grab a microphone and sing your favorite song with your Cruise Staff and DJ Marius.

# BINGO

## DOUBLE-UP JACKPOT BINGO

Don't miss our four CASH prize games and your chance to win some Pirate treasure! Great DCL raffles prizes are also up for grabs plus your chance to win the Jackpot money early! All electronic chances are doubled today!

**D Lounge**

**Deck 4, Midship**

**Pre Sales - 4:00 p.m.**

**Game Starts - 4:15 p.m.**



# YOUTH ACTIVITIES HIGHLIGHTS

## DINE & PLAY

A convenience for families dining at 8:15 p.m., our Youth Activities Counselors will be available at 9:15 p.m. at the entrance of Royal Palace, Enchanted Garden and Animator's Palate dining rooms to bring registered children to join the fun in the Youth Activity areas.



**Deck 5, Midship (7-1440)** 5:00 p.m. - 12:00 Mid  
(3 - 12 years old)

## ONCE UPON A TIME

**5:00 p.m.**  
Join Bartleby the Bookmaker for a magical, musical story time featuring a Disney Princess!

## SO YOU WANT TO BE A PIRATE?

**6:15 p.m. & 8:30 p.m.**  
Have you learned about life on the high seas? Do you have what it takes to be a pirate? Join Captain Hook and his friends to find out!



**Deck 5, Midship (7-1445)** 4:00 p.m. - 1:00 a.m.  
(3 - 12 years old)

## ANYONE CAN COOK

**7:15 p.m.**  
Anyone can cook as we work together to create some of our favorite treats.

## GET THE HOOK

**9:15 p.m.**  
A villainous villain has stolen Captain Hook's prized golden hook. Become a member of the Top Deck Detective Agency and help solve the clues to retrieve Hook's hook.



**Deck 13, Midship (7-9743)** 4:00 p.m. - 1:00 a.m.  
(11 - 14 years old)

## MAGIC SHOW

**8:30 p.m.**  
Put some magic and wonder in your Dream vacation. Say, "Abracadabra!" and fun is sure to appear!

## A PIRATE'S LIFE FOR ME

**D Lounge, Deck 4, Midship - 11:45 p.m.**  
Calling all Pirates, we be! If ye have an adventurous spirit or pirate savvy, come spin the "Wheel of Destiny," fer a treasure trove of fun be ripe for the takin' in this action packed pirate game show



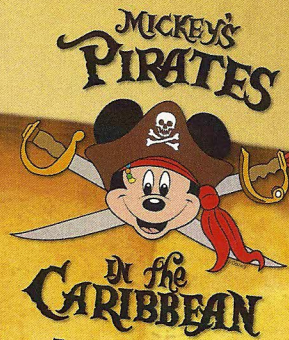
**Entrance on Deck 4, Forward (7-9417)**  
5:00 p.m. - 2:00 a.m.  
(14 - 17 years old)

## PUMP IT UP

**9:00 p.m.**  
Join us for an exclusive, teen only workout in the Senses Fitness Center! Pump It Up is offered daily from 9:00 p.m. - 10:30 p.m. Please check in at Vibe if you would like to attend!

## DANCE PARTY

**12:30 a.m.**  
Join your Vibe counselors tonight and dance along to your favorite songs!



**7:45 - 8:05 p.m.**  
Pirate Games start at 7:30 p.m.  
Deck Stage, Deck 11, Midship

It's a Pirate Celebration, me hearties!  
Come experience all the pirate fun alongside Captain Mickey Mouse and his famous Pirate Crew.  
(Weather Permitting)



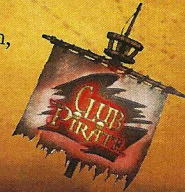
**Buccaneer Blast Fireworks**  
What's a pirate party without some fireworks to remind the other ships who be ruling the oceans blue?

**10:30 p.m.**  
Decks 11 & 12, Midship mark the spot

Fireworks will be on display Starboard side  
Seen best from Deck 11, center pool area, and on Deck 12.

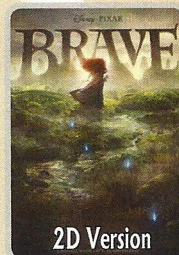
## Club Pirate

If ye be a fan of Pirates of the Caribbean, tis time to revel in the night at the hottest dance club in all the seven seas with Guest DJ Christian Gama  
(Immediately following Buccaneer Blast)



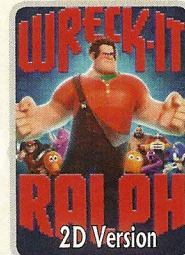
# BUENA VISTA THEATRE

## Today's Movies



2D Version

8:30 a.m.  
Run Time: 1 hr 45 min  
Rating: PG



2D Version

12:00 p.m.  
Runtime: 1 hr 51 min  
Rating: PG



DOLBY DIGITAL

2:30 p.m. - **OC**  
& 11:00 p.m.  
Runtime: 2 hr 32 min  
Rating: PG-13



DOLBY DIGITAL

5:45 & 8:30 p.m.  
Runtime: 1 hr 31 min  
Rating: PG



# MORE TO ENJOY WHILE ONBOARD

## ON DEMAND TV

Watch Disney movies, Hollywood features, ABC Shows, and even captioned content, plus much more "On Demand" for FREE in the comfort of your stateroom! Bookmark your movie and come back to watch it later. Press MENU on your stateroom television remote control and follow the prompts.

## DISNEY VACATION CLUB® GROUP PREVIEW

Want to learn more about taking magical vacations year after year? Please see a Disney Vacation Club representative on Deck 4, Midship, or call 7-2805 from your stateroom phone for more information about our interactive group presentation.

## PROTECT YOUR PURCHASES

Don't forget to activate your 60 day buyer's guarantee form for your purchases in Nassau. It's free and confidential. Pick one up at the Shopping Desk, Deck 4, Midship.



## SALON TASTER SPECIAL

Choose from scalp massage, European facial, hand treatment, sunglow make-over, hair treatment, eye-collagen treatment, foot & ankle massage and neck & shoulder massage.

Three for \$99, five for \$119, and eight for \$139.

**ISLAND SPECIAL:** Cabana full body massage at Serenity Bay for \$99 per person, call 7-1465 to make an appointment.

## ALBERTO COLLECTIONS PRESENTS: EMERALDS - "THE GARDEN OF THE EARTH"

Colombian Emeralds possess the deepest shade of green and a magnificent glow, setting the highest standards of quality. View the magical green fire of our Colombian Emeralds Collection.



*White Caps, Deck 3, Forward*

## Shutters PROFESSIONAL PORTRAITS

*Lobby Atrium, Deck 3, Midship*

Lifestyle & Ships Bow – Six Guests maximum

5:15 p.m. – 6:00 p.m., 7:15 p.m. – 8:30 p.m. & 9:30 p.m. – 10:30 p.m.

Grand Staircase – Groups accommodated

7:15 p.m. – 8:30 p.m.

*\*Please note that photos are available for viewing on our interactive photo kiosks approximately three hours after being taken and are only available for purchase during this cruise.*

## Disney CRUISE LINE. PORT ADVENTURES

Welcome to Disney's Island Paradise Castaway Cay. Today is the day to relax in an inner tube, snorkel in the Caribbean blue, get up-close and personal to real life stingrays or fly high in the sky on a parasail excursion during a breathtaking aerial adventure. Visit Marge's Barges or one of the rental locations and our friendly team will assist in making any last minute bookings.

### PORT ADVENTURES MEETING TIMES AND LOCATIONS

As per ticket	Castaway Ray's Stingray Adventure	Gil's Fins and Boats
As per ticket	Glass Bottom Boat	Marge's Barges
As per ticket	Castaway Cay Bottom Fishing	Marge's Barges
As per ticket	Nature Walk and Kayaking	Marge's Barges
As per ticket	Parasailing	Marge's Barges
9:00 a.m.	Teen Wild Side	Vibe
As per ticket	Single & Double Watercraft	Boat Beach

### CASTAWAY CAY ISLAND RENTALS

Bicycles	9:00 a.m. - 4:00 p.m.	Bike Rentals
Boats	9:00 a.m. - 4:00 p.m.	Boat Beach
Snorkeling Gear	9:00 a.m. - 3:30 p.m.	Gil's Fins and Boats / Flippers and Floats
Float	9:00 a.m. - 3:30 p.m.	Gil's Fins and Boats / Flippers and Floats
Getaway Package	9:00 a.m. - 3:30 p.m.	Gil's Fins and Boats / Flippers and Floats

Reservations can be made on the island at each rental location. Castaway Ray's walk up reservations can be made at Gil's Fins and Boats on Family Beach.

## SHOPPING

### MAROONED IN PARADISE

Welcome to Disney's Castaway Cay! She Sells Seashells... And Everything Else and Buy The Seashore are your island memory destinations where you can find everything from apparel to plush to postcards to swimwear and, well, everything else! Get your Run Disney Castaway Cay 5K tee exclusively at Buy The Seashore.

### JOIN THE CREW OR WALK THE PLANK

Sign ye up to plunder and pillage with pirate swords and eye patches, and find your very own pirate costume. All supplies for tonight's adventure can be gathered at Mickey's Mainsail, Deck 3, Midship and Quacks, Deck 11, Midship.

### BURIED TREASURE REVEALED

Enter the Vista Gallery and discover hidden gems at sea. Re-live your cruise experience for years to come with a piece of exclusive Disney Cruise Line art. Discounted shipping available on two or more pieces of art. Place a bid on our silent auction pieces as well, bidding closes at 6:00 p.m. tomorrow. Vista Gallery, Deck 4, Midship.

### SWAROVSKI COLLECTIONS ONBOARD THE DREAM

Whitecaps is the destination to visit to see all things that bling! Swarovski Jewelry - Rings, Necklaces and Earrings, also pens available. All at great Duty Free Prices.

### DISNEY CRUISE LINE FALL FASHIONS

Celebrate a day at sea in style by visiting Sea Treasures to experience our newly released fall line. Nautical-inspired attire for the whole family that will showcase your unique personality with many looks for everyone. Sea Treasures, Deck 3, Forward.

### MEMORIES FROM ACROSS THE MAP

Come try on one of our quality designer fragrances from all over the world! Chanel, Gucci, Jimmy Choo, and many more for men and women. White Caps, Deck 3, Forward.

Due to port regulations, when the ship is docked, the stores will remain closed.

## IMPORTANT INFORMATION

### Security Notice

All Guests (including children) who wish to disembark the ship are required to present their Key to the World card at the gangway. A photo ID is also required for those Guests who are 18 years of age or older. Guests under the age of 18 are required to have a Parent, Guardian or other responsible adult sign an authorization form at the time it is given out if they wish to go ashore unaccompanied. Authorization forms are available at the gangways and Guest Services.

### Please Note:

Please remember to use plenty of sunscreen and mosquito repellent when venturing ashore.

### Cold and Flu Reminder

Please wash hands frequently and thoroughly, particularly before meals. Contact the Health Center by dialing 7-1923, should anyone in your party become ill.

### Corridor Quiet Hours

As a courtesy to all our Guests, please recognize quiet hallway hours from 10:00 p.m. til 8:00 a.m.

### Inclement Weather

For the safety of all Guests, outdoor events may be changed due to unforeseen weather conditions.

### Environmental Message

With Disney's commitment to the Environment, please refrain from throwing anything over the Ship's side. Thank you!

### No Reserved Seats Policy

As a courtesy to all our Guests, we kindly advise that the saving of seats is not permitted in the Walt Disney Theatre, and the saving of the sun loungers is not permitted on Deck 11, 12, and 13. Items left unattended will be returned to lost and found at Guest Services, Deck 3 Midship.

### Smoking

For the comfort of our guests the following areas are designated as Smoking areas:

- Deck 13, Forward, port side, by "Currents"
- Deck 12, Aft, port side outdoor area that is accessible through the Meridian Lounge
- Deck 4, Aft, port side from 6:00 p.m. to 6:00 a.m. only (all of Deck 4 is no smoking from 6:00 a.m. to 6:00 p.m.)

-Smoking is permitted on stateroom verandahs. Smoking is prohibited inside all guest staterooms. Guests found smoking in their staterooms will be charged a \$250 stateroom recovery fee.

### Walt Disney Theatre

Theatrical performances may use artificial fog, strobe lights, pyrotechnics and other special effects. For the safety of our performers and the comfort of those around you, the use of any photography, video recording device or any electronic equipment is prohibited.

### Verandah Safety

Please do not leave any combustible materials on your balcony when not present in your stateroom for safety reasons.

DD/CL/4D/181/12.02.2012/MJM/©DISNEY



Morning	8:30	8:45	9:00	9:15	9:30	9:45	10:00	10:15	10:30	10:45	11:00	11:15	11:30	11:45	12:00	12:15	12:30	12:45	1:00	1:15	1:30	
FUNNEL VISION	Alice in Wonderland (G) Funnel Vision						Lilo & Stitch (G) Funnel Vision						Toy Story 3 (G) Funnel Vision									
MOVIES	Brave (PG) 2D Version Buena Vista Theatre												BUENA VISTA THEATRE  RATED: PG - 2D VERSION >1:51 p.m.									
CHARACTER	Donald Gangway	Jack Sparrow Island Pathway	Mickey Scuttles	Daisy Gangway	Minnie Scuttles	Hook & Smees Post Office	Mickey Rustmore	Daisy Gangway	Goofy Scuttles	Character Dance Party Island Gazebo 1												
FUN FOR ALL AGES	(12+) Meet at Evolution (Departs at 8:45 a.m.)				Island Power Walk/Stroller Fitness Meet at the Post Office at 9:30 a.m., Departs at 9:45 a.m.						Crab Races Gazebo 1		Crab Races Gazebo 2		DJ Marius: Island Jams Gazebo 1		Basketball Free Throw In Da Shade Games		Tony Delaney on the Guitar Gazebo 1 - Live Music			
ADULTS	Friends of Bill W. Outlook				Yoga on the Beach Serenity Bay				Club 18*21 Volleyball Sports Beach		Basketball Free Throw In Da Shade Games				18*21 Basketball In Da Shade Games		Two for One Mojitos Heads Up Bar					
VIBE	Meet for Wildside at Vibe				Teen Hideout Opens				Volley Ball				Lunch Cookies Too									
EDGE					Sand Soccer Sports Beach				Basketball Runway				Lunch Cookies Too									
SCUTTLES COVE	Water Relays				Sebastian Sea Search				Treasure Hunt				Lunch									
OCEANEER LAB					Soccer				Whale Dig				Sand Castle Competition									
OCEANEER CLUB	Youth Activities Open House																					

Symbol for activities that will be repeated during the cruise

FOLD

Afternoon	1:45	2:00	2:15	2:30	2:45	3:00	3:15	3:30	3:45	4:00	4:15	4:30	4:45	5:00	5:15	5:30	5:45	6:00	6:15	6:30	6:45
FUNNEL VISION	Pixar Shorts (G) Funnel Vision		Peter Pan (G) Funnel Vision				Tinker Bell (G) Funnel Vision				Virtual Tours										
MOVIES	BUENA VISTA THEATRE LINCOLN Rated: PG-13												Frankenweenie (PG)  >7:16 p.m.								
CHARACTER					Lilo & Stitch Gangway	Hook & Smees Gangway				Minnie Mouse Lobby Atrium	Stitch Preludes		Tinker Bell Atrium	Jack Sparrow D Lounge							
FUN FOR ALL AGES	Sports Simulator Available for Bookings Sports Deck				Youth Activities Open House Edge				Bingo Pre Sales		Double-Up Jackpot D Lounge		Rob Sanders on the Keys District Lounge - Live Music		Lynn Trefzger Walt Disney Theatre						
ADULTS	Tony Delaney on the Guitar Gazebo 1 - Live Music				DJ Marius Spins on the Island Gazebo 1				Pirate Trivia District Lounge		A Pirate's Life for Me D Lounge										
VIBE					Making of the Dream Evolution				Beer Tasting (21+) 687 Pub (Pre Book/Nom Fee)		18*21 X-Box Challenge 687 Pub		ESPN Dream Team Draft Day 687 Pub								
EDGE	In Da Shade Games				Invade Teen Hideout til 4pm				Tween Pool Party in Vibe				Anyone Can Cook								
SCUTTLES COVE	Caribbean Beach Party				Capture the Flag				Scuttles Cove Closes at 4:00 p.m.												
OCEANEER LAB					POTC: Tides of Fortune				Adventure Squad				Dinner								
OCEANEER CLUB	Youth Activities Open House - "Magic Playfloor" - 4:15 p.m. - 4:45 p.m.												Once Upon a Time		Dinner		So You Want To Be A Pirate?				

FOLD along the dotted lines and take me with you so you don't miss any of the fun!

FOLD

Evening	7:00	7:15	7:30	7:45	8:00	8:15	8:30	8:45	9:00	9:15	9:30	9:45	10:00	10:15	10:30	10:45	11:00	11:15	11:30	11:45	12:00
FUNNEL VISION	Mickey's Pirates			Muppet Treasure Island (G) Funnel Vision						Buccaneer Blast & Club Pirate						POTC: The Curse of the Black Pearl (PG-13) Funnel Vision					
MOVIES	Frankenweenie (PG)  Buena Vista Theatre												BUENA VISTA THEATRE LINCOLN Rated: PG-13 >1:32 a.m.								
CHARACTER	Stitch Dk4, Balcony	Jack Sparrow Deck Stage, Deck 11, Midship		Mickey's Pirates Deck Stage, Deck 11, Midship				Chip & Dale Dk 4, Balcony	Mickey Deck 4, Balcony	Tinker Bell Lobby Atrium		Daisy Atrium		Stitch Preludes	Donald Atrium	Hook & Smees Preludes					
FUN FOR ALL AGES	Pirate Games Deck Stage, Deck 11, Midship		Pirates of the Caribbean Deck Stage, Deck 11, Midship		Lynn Trefzger Walt Disney Theatre				A Pirate's Life for Me D Lounge		Buccaneer Blast Fireworks followed by Club Pirate Deck Stage, Deck 11, Midship										
ADULTS	Tony Delaney LIVE Quiet Cove - Live Guitar		TV Tune Trivia #1 687 Pub		Rob Sanders on the Keys District Lounge - Live Music				The Dreamers LIVE District Lounge - Live Music		Club 18*21 Mixer Currents		Adult Krazy Karaoke followed by Evolution Nightclub Evolution		The Dreamers LIVE District Lounge - Live Music						
VIBE	Smoothie Time				Pump it Up				Fireworks				Mix & Match		A Pirate's Life for Me						
EDGE					Magic Show				Fireworks				Club Pirate								
OCEANEER LAB	Anyone Can Cook				Magic Playfloor				Get The Hook				POTC: Tides of Fortune								
OCEANEER CLUB	Magic Playfloor				So You Want To Be A Pirate?				Memory Wall		Pluto's PJ Party		Youth Activities Open House "Magic Playfloor" 11:00 p.m. - 11:30 p.m.								

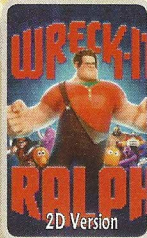
IN THE SPOTLIGHT SERIES  
SOLVE IT! SERIES  
JUMP UP! SERIES  
CREATE & INVENT SERIES  
OPEN HOUSE  
CLUBHOUSE SERIES  
STORYBOOK SERIES



# BUENA VISTA THEATRE



2D Version  
8:30 a.m.  
Runtime:  
1 hr 45 min  
Rating: PG



2D Version  
12:00 p.m.  
Runtime:  
1 hr 51 min  
Rating: PG



Runtime: 2 hr 32 min  
Rating: PG-13



5:45 & 8:30 p.m.  
Runtime:  
1 hr 31 min  
Rating: PG

## Character Appearances

### DONALD DUCK

Gangway  
8:45 a.m. & 9:45 a.m.  
Lobby Atrium - 9:45 p.m.

### DAISY DUCK

Gangway  
9:30 a.m. & 10:30 a.m.  
Lobby Atrium - 9:15 p.m.

### SANTA CLAUS

Lobby Atrium - 9:00 a.m.

### CHIP & DALE

Post Office  
9:30 a.m. & 10:30 a.m.  
Deck 4, Balcony - 9:00 p.m.

### JACK SPARROW

Island Pathway - 9:00 a.m.  
Pelican Point - 10:15 a.m.  
D Lounge - 5:30 & 7:30 p.m.

### GOOFY

Mt. Rustmore - 9:45 a.m.  
Scuttle's Cove - 10:45 a.m.

### HOOK & SMEE

Post Office  
9:00 a.m. & 10:00 a.m.  
Gangway - 3:30 p.m.  
Preludes  
5:30 p.m. & 10:00 p.m.

### MINNIE MOUSE

Scuttle's Cove - 9:45 a.m.  
Mt. Rustmore - 10:45 a.m.  
Lobby Atrium - 4:45 p.m.

### MICKEY MOUSE

Scuttle's Cove - 9:15 a.m.  
Mt. Rustmore - 10:15 a.m.  
Deck 4, Balcony  
5:00 p.m. & 9:30 p.m.

### CHARACTER DANCE PARTY

Island Gazebo 1- 12:15 p.m.

### TINKER BELL

Lobby Atrium - 5:15 p.m.,  
7:15 p.m., & 9:45 p.m.

### PLUTO

Mt. Rustmore - 9:15 a.m.  
Scuttle's Cove - 10:15 a.m.

### STITCH

Deck 4, Balcony - 7:00 p.m.  
Preludes  
5:00 p.m. & 9:30 p.m.

### LILO & STITCH

Gangway - 9:15 a.m.,  
10:15 a.m. & 3:00 p.m.

Don't forget your Camera to capture those Magical Moments!  
For details of daily Disney character appearances, refer to the character line in your Navigator Grid.

## YOUTH ACTIVITIES THEMED EXPERIENCES

**CLUBHOUSE SERIES**  
focuses on movement and features content which appeals to younger children.

**JUMP UP! SERIES**  
includes large ground games & movement-oriented activities.

**IN THE SPOTLIGHT SERIES**  
focuses on children's stage presence with lots of activities and enthusiasm.


**STORYBOOK SERIES**  
is designed with a strong connection to the Disney classic stories.

**CREATE & INVENT SERIES**  
will have a tactile focus allowing children to create and admire their work.

**SOLVE IT! SERIES**  
are less active, but will challenge children with problem/solutions based activities.

### OPEN HOUSE

activities for families, adults and children of all ages to enjoy together.



## GOOFY'S SPORTS Digital Simulators

**Sports Simulator**  
(Basketball, Baseball, Hockey, or Soccer)  
\$12 / half hr, \$20 / hr

**Golf Simulator**  
\$25 / half hr, \$45 / hr

Reservations can be made at the Port Adventures Desk, Deck 5, Midship or at the Simulators, Deck 13, Aft

## SHIP DIRECTORY

### YOUTH ACTIVITIES

DISNEY'S OCEANEER CLUB	DECK 5, MID	5:00 P.M. - 12:00 MID.
DISNEY'S OCEANEER LAB	DECK 5, MID	4:00 P.M. - 1:00 A.M.
EDGE	DECK 13, MID	4:00 P.M. - 1:00 A.M.
VIBE	DECK 4, FWD	5:00 P.M. - 2:00 A.M.
IT'S A SMALL WORLD NURSERY	DECK 5, MID	9:00 A.M. - 1:00 A.M.

### RECREATION

AQUADUCK	DECK 12, MID	9:00 A.M. - 8:30 P.M.
DONALD'S POOL	DECK 11, MID	6:00 A.M. - 5:00 P.M.
GOLF/SPORTS SIMULATOR	DECK 13, AFT	1:00 P.M. - 6:00 P.M.
GOOFY'S SPORTS DECK	DECK 12, AFT	12:00 A.M. - 6:00 P.M.
MARGE'S BARGES	CASTAWAY CAY	9:00 A.M. - 3:00 P.M.
GOOFY & MAX'S MINI GOLF	DECK 13, AFT	8:00 A.M. - 8:30 P.M.
MICKEY'S POOL	DECK 11, MID	6:00 A.M. - 5:00 P.M.
MICKEY'S SLIDE	DECK 11, MID	9:00 A.M. - 6:00 P.M.
MIDSHIP DETECTIVE AGENCY	DECK 5, MID	8:00 A.M. - 11:00 P.M.
NEMO'S REEF	DECK 11, MID	10:00 A.M. - 6:00 P.M.
QUIET COVE POOL	DECK 11, FWD	6:00 A.M. - 12:00 MID.
SENSES FITNESS CENTER	DECK 11, FWD	6:00 A.M. - 10:00 P.M.

### GENERAL INFORMATION

ARR-CADE	DECK 11, AFT	24 HOURS
DISNEY VACATION CLUB	DECK 4, MID	5:30 P.M. - 10:00 P.M.
FUTURE CRUISE SALES DESK	DECK 4, MID	8:00 A.M. - 10:00 A.M. 3:00 P.M. - 9:30 P.M.
GUEST SERVICES	DECK 3, MID	24 HOURS
HAIR BRAIDING	DECK 11, MID	5:30 P.M. - 10:00 P.M.
MEDICAL HEALTH CENTER	DECK 1, FWD	9:30 A.M. - 11:00 A.M. 4:30 P.M. - 7:00 P.M.
PRELUDES	DECK 3, FWD	5:45 P.M. - 6:30 P.M. 8:00 P.M. - 8:45 P.M.
SENSES SPA AND SALON	DECK 11, FWD	8:00 A.M. - 10:00 P.M.
SHUTTERS PHOTO GALLERY	DECK 4, MID	5:00 P.M. - 11:00 P.M.

### SHOPPING

MICKEY'S MAINSAIL	DECK 3, FWD	5:30 P.M. - 11:00 P.M.
SEA TREASURES	DECK 3, FWD	5:30 P.M. - 11:00 P.M.
WHITE CAPS	DECK 3, FWD	5:30 P.M. - 11:00 P.M.
VISTA GALLERY	DECK 4, MID	6:00 P.M. - 11:00 P.M.
WHOZITS & WHATZITS	DECK 11, MID	7:00 P.M. - 11:00 P.M.
QUACKS	DECK 11, MID	7:00 P.M. - 11:00 P.M.

DUE TO PORT REGULATIONS, WHEN THE SHIP IS DOCKED, THE STORES MUST REMAIN CLOSED.

## DINNER MENU

Animator's Palate: Pirate's Menu  
Enchanted Garden: Pirate's Menu  
Royal Palace: Pirate's Menu  
Dining Times: 5:45 p.m. & 8:15 p.m.

## DRINK OF THE DAY

Bahama Mama (Alcoholic)  
Coco Bali (Non Alcoholic)

## WEATHER FORECAST

Tuesday: Sunny  
High: 73°F/23°C  
Wednesday: Sunny  
High: 73°F/23°C

Evening Attire: Pirate/ Cruise Casual

## DINING & LOUNGES

### BREAKFAST

CABANAS CONTINENTAL(PORT SIDE)	DECK 11, AFT	7:00 A.M. - 7:30 A.M.
CABANAS	DECK 11, AFT	7:30 A.M. - 10:45 A.M.
ENCHANTED GARDEN	DECK 2, MID	8:00 A.M. - 10:30 A.M.
ROYAL PALACE	DECK 3, MID	8:00 A.M. - 9:30 A.M.

### LUNCH

CABANAS	DECK 11, AFT	12:00 P.M. - 1:30 P.M.
COOKIES BBQ	CASTAWAY CAY	11:30 A.M. - 2:00 P.M.
COOKIES BBQ TOO	CASTAWAY CAY	11:30 A.M. - 2:00 P.M.
FILLMORE'S FAVORITES	DECK 11, MID	11:00 A.M. - 6:00 P.M.
LUIGI'S PIZZA	DECK 11, MID	11:00 A.M. - 6:00 P.M.
TOW MATER'S GRILL	DECK 11, MID	11:00 A.M. - 6:00 P.M.

### DINNER

ANIMATOR'S PALATE	DECK 3, AFT	5:45 P.M. & 8:15 P.M.
ENCHANTED GARDEN	DECK 2, MID	5:45 P.M. & 8:15 P.M.
ROYAL PALACE	DECK 3, MID	5:45 P.M. & 8:15 P.M.
CABANA ALA CARTE	DECK 11, MID	6:30 P.M. - 8:30 P.M.
PALO & REMY (18+)	DECK 12, AFT	6:00 P.M. - 9:00 P.M.

(RESERVATION REQUIRED & COVER CHARGE APPLICABLE. DIAL #7-9734)

TOW MATER'S GRILL	DECK 11, MID	6:00 P.M. - 11:00 P.M.
-------------------	--------------	------------------------

### LATE NIGHT SNACKS

CABANAS - PIRATES MENU	DECK 11, AFT	10:45 P.M. - 11:30 P.M.
LUIGI'S PIZZERIA	DECK 11, MID	9:30 P.M. - 12:30 A.M.

### ADDED FEATURES

BEVERAGE STATION	DECK 11, AFT	24 HOURS
EYE SCREAM	DECK 11, MID	11:00 A.M. - 12:30 A.M.
ROOM SERVICE	DIAL 0	24 HOURS

### ENTERTAINMENT - LOUNGES - BARS

Adults must be 21 and older to consume alcoholic beverages.

687 PUB	DECK 4, AFT	5:00 P.M. - 9:00 P.M.
687 PUB (18+)	DECK 4, AFT	9:00 P.M. - 12:30 A.M.
BON VOYAGE	DECK 3, MID	3:00 P.M. - 11:00 P.M.
COVE BAR (18+)	DECK 11, FWD	11:00 A.M. - 11:30 P.M.
COVE CAFE (18+)	DECK 11, FWD	7:00 A.M. - 12:00 MID.
CURRENTS	DECK 13, FWD	2:00 P.M. - 12:00 MID.
D LOUNGE	DECK 4, MID	SHOWTIMES
DISTRICT LOUNGE	DECK 4, AFT	4:30 P.M. - 9:00 P.M.
DISTRICT LOUNGE (18+)	DECK 4, AFT	9:00 P.M. - 12:00 MID.
EVOLUTION (18+)	DECK 4, AFT	10:00 P.M. - 2:00 A.M.
FROZONE TREATS	DECK 11, MID	11:00 A.M. - 11:30 P.M.
MERIDIAN (18+)	DECK 12, AFT	5:00 P.M. - 12:30 A.M.
OUTLOOK	DECK 14, MID	SUNSET TIMES
PINK	DECK 4, AFT	5:00 P.M. - 12:30 A.M.
SKYLINE (18+)	DECK 4, AFT	5:00 P.M. - 12:30 A.M.
VISTA CAFE	DECK 4, MID	7:30 A.M. - 11:00 P.M.
WAVES	DECK 12, AFT	3:00 P.M. - 10:00 P.M.

### CASTAWAY CAY BARS

CONCHED OUT BAR	CASTAWAY CAY	9:30 A.M. - 4:00 P.M.
CASTAWAY AIR BAR	CASTAWAY CAY	9:30 A.M. - 3:30 P.M.
HEADS UP BAR	CASTAWAY CAY	10:00 A.M. - 3:30 P.M.
SAND BAR	CASTAWAY CAY	10:30 A.M. - 3:30 P.M.

Consumers who order raw or partially cooked, ready-to-eat food of animal origin, are hereby informed that the food is not sufficiently cooked to ensure its safety.

### IMPORTANT NUMBERS

Fire/Security:	7-3001
Medical EMERGENCY:	7-3000
Health Center:	7-1923

All Ashore:  
Approx. 8:30 a.m.

All Aboard:  
5:00 p.m.